

MEDICA

EasyLyte[®] medicacorp.com

Na⁺/K⁺

Na⁺/K⁺/Cl⁻

Na⁺/K⁺/Li⁺

Na⁺/K⁺/Ca⁺⁺/pH



EasyLyte[®]

easy inside and out

- **Easy to Use**

Simple, menu-driven, Yes/No prompted operation

Whole blood, serum, plasma or urine samples

Results printed automatically in less than 60 seconds

Automatic or on-demand calibration

Automatic probe wiping

- **Easy to Maintain**

All calibrants contained in convenient, disposable solutions pack

All waste collected in solutions pack

Disposable electrodes require no maintenance

Modular design makes maintaining analyzer simple and fast

- **Easy to Afford**

Low analyzer purchase price

Low cost per test

- **Available in four models:**

- **EasyLyte** Na⁺/K⁺

- **EasyLytePLUS** Na⁺/K⁺/Cl⁻

- **EasyLyteLithium** Na⁺/K⁺/Li⁺

- **EasyLyteCalcium** Na⁺/K⁺/Ca⁺⁺/pH





EasyLyte

EasyLyte®

Solutions Pack
Kit de soluciones
Confezione di soluzioni
Lösungspackung
Embalagem de Soluções
Kit de soluciones

CE NEF 2171

Medica Corporation, 3 Day Park Drive
Burlington, MA 01803-1000

MEDICA
801204 001 01

Modular, maintenance-free electrodes



Cl⁻



Pressing Yes or No buttons is all that is required to analyze serum, plasma or whole blood



Internal printer prints patient results, calibration values, quality control data, and results summaries, flagging abnormal results

K⁺

Self-contained Solutions Pack contains liquid calibrants and collects all waste, eliminates sample contact



Capillary sampler is removable and disposable

EasySampler

The modular EasySampler connects quickly to the EasyLyte Na/K, Na/K/Cl, and Na/K/Li analyzers, enhancing laboratory performance.

- 21 sample positions
- Dedicated Stat position
- Normal/Abnormal QC positions
- Optional auto-repeat of out-of-range values



Li+

pH

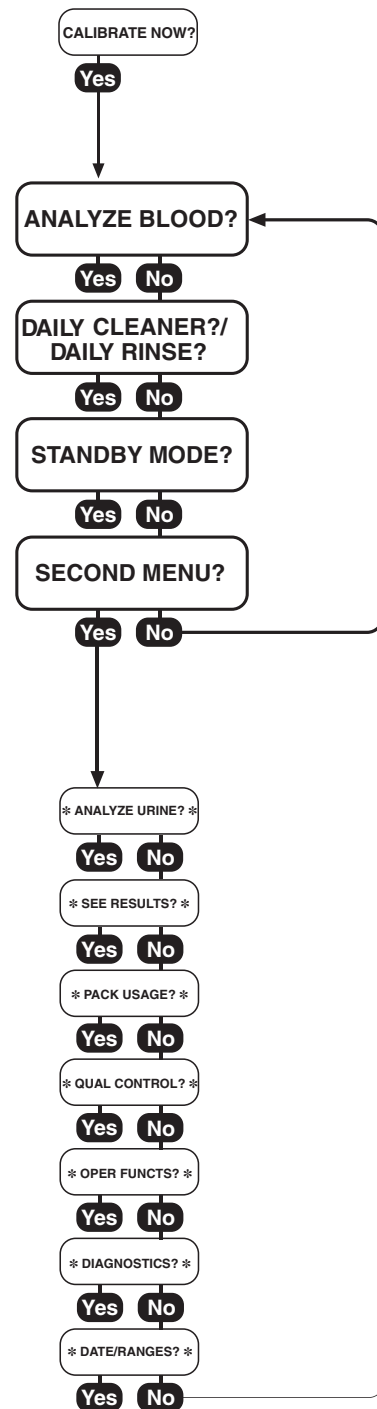
Analyzer software insures ease of operation

Software computes quality control statistics, flags abnormal results, and monitors performance.

- Two button operation
- Automatic calibration
- User-friendly menu

Ca⁺⁺

Na⁺



Specifications

(Na⁺/K⁺, Na⁺/K⁺/Cl⁻, Na⁺/K⁺/Li⁺, Na⁺/K⁺/Ca⁺⁺/pH)

MEDICA

CLIA Classification: Moderate Complexity
Sample Type: Whole Blood, Serum, Plasma or Urine
Sample Size: 100 µL Whole Blood, Serum, Plasma, 60 µL capillary or 400 µL diluted (1:10) Urine
Method: Direct measurement by Ion Selective Electrode (ISE)

Medica Corporation
 5 Oak Park Drive
 Bedford, MA 01730-1413
 USA

USA 800 777 5983

Global +1 781 275 4892

Fax 781 275 2731

medicacorp.com

Measurement Range:

Blood	Urine
Na ⁺ : 20 – 200 mmol/L	Na ⁺ : 25 – 1000 mmol/L
K ⁺ : 0.2 – 40 mmol/L	K ⁺ : 1.0 – 500 mmol/L
Cl ⁻ : 25 – 200 mmol/L	Cl ⁻ : 25 – 500 mmol/L
Li ⁺ : 0.2 – 5.0 mmol/L	
Ca ⁺⁺ : 0.1 – 6.0 mmol/L	
pH: 6.0 – 8.0 Units	

Display Resolution: Na⁺: 0.1 mmol/L K⁺: 0.01 mmol/L Cl⁻: 0.1 mmol/L
 Li⁺: 0.01 mmol/L Ca⁺⁺: 0.01 mmol/L pH: 0.005 units

	Na ⁺ /K ⁺	Na ⁺ /K ⁺ /Cl ⁻	Na ⁺ /K ⁺ /Li ⁺	Na ⁺ /K ⁺ /Ca ⁺⁺ /pH
Analysis time (blood)	55 sec	55 sec	55 sec	60 sec
Urine Mode	Yes	Yes	Yes	No
Analysis time (urine)	90 sec	90 sec	90 sec	N/A
EasySampler	Yes	Yes	Yes	No
Capillary Samples	Yes	Yes	Yes	No

Data Storage: Patient results — up to 128 samples
 QC results — up to 20 each Normal, Low, and High

Calibration: Automatic or On-Demand

Output: 128 x 64 pixel graphic display
 24 column thermal printer
 Serial port (RS-232), EasySampler port

Ambient Conditions: 15–32°C (60–90°F), <85% humidity

Power: 100-240 VAC 50/60 Hz, 0.8A

Size & Weight: 9.5"W x 16.5"H x 8.0"D (24 cm W x 42 cm H x 20 cm D) 13 lbs. (5.8 kg)

Distributed by



Meditec Instruments Co.
 Deals in: Medical / Laboratory Instruments, Reagents & Consumables

HEAD OFFICE
 Suite 202, Rain Plaza Plot No. A-20,
 Comm. Area Near Duty Free Shop,
 Karamba, F-5330, Pakistan.
 Toll: 3431-4280-1 Fax: (92-21) 3431-4282,
 email: medicacorp@meditec.com.pk
 Website: www.meditec.com.pk

Branches:
 Karachi : 0334-0022552 / 0332-4314289
 Lahore : 0334-0022554 / 042-3711735
 Rawalpindi : 0334-0022556 / 051-2246504
 Islamabad : 0334-0022558 / 051-5174203
 Quetta : 0334-0022557 / 081-2637072
 Faisalabad : 0334-0022553
 Multan : 0334-0022558

EasyLyte EXPAND

Na⁺ K⁺ Cl⁻ Ca⁺⁺ Li⁺

EasyLyte Expand
More options for testing electrolytes



Intentionally easy

... to do more

- Confidence in medical decision with rapid and accurate results for 4 parameters in one sample
- Compatible with serum, plasma, whole blood or urine samples

... to use

- Minimal training required with Yes/No intuitive interface
- Automatic or on-demand calibration
- Automatic probe wiping

... to maintain

- Reagents and waste conveniently contained in single multi-use pack
- Maintenance-free disposable electrodes



<http://mediacorp.com/electrolyte-analyzers/easylyte>

experience **Easy**

EasyLyteEXPAND Technical Specifications

CLIA Classification:	Moderate Complexity
Configurations:	Na ⁺ /K ⁺ /Cl ⁻ /Ca ⁺⁺ or Na ⁺ /K ⁺ /Cl ⁻ /Li ⁺
Analysis Time:	Plasma, Serum, Whole Blood: 60 seconds Urine: 90 seconds (Na ⁺ /K ⁺ /Cl ⁻ only)
Sample types:	Whole Blood, Serum, Plasma, or Diluted Urine
Sample Size:	100 µL Whole Blood, Serum, Plasma or 400 µL Diluted (1:10) Urine
Sample Temperature:	Ambient Temperature (15–32°C)
Method:	Direct (undiluted) measurement by Ion Selective Electrode (ISE)
Calibration:	Automatic 1-point calibration with every sample or on-demand Automatic 2-point calibration every 4 hours
Output:	128 x 64 pixel graphic display: 24 column thermal printer Serial port (RS-232 optional)
Ambient Conditions:	15-32°C (60-90°F), <85% humidity
Power:	100-240 VAC 50/60 Hz 0.8A (serial numbers beginning with "C")
Size:	9.5" (W) x 16.5" (H) x 8.0" (D); 24 cm (W) x 42 cm (H) x 20 cm (D)
Weight:	13lbs; 5.8 kg

Data Storage

Patient:	125 results
QC:	Normal: 20 results; Low: 20 results; High: 20 results

Optional Equipment

Barcode Reader:	Sample ID
EasySampler:	(Na ⁺ /K ⁺ /Cl ⁻ /Li ⁺ automated sampling only)

Performance

	Units	Na ⁺	K ⁺	Cl ⁻	Ca ⁺⁺	Li ⁺
Resolution:	mmol/L	0.1	0.01	0.1	0.01	0.01

Serum, Plasma, Whole Blood

Detection Range:	mmol/L	20–200	0.2–40	25–200	0.1–6.0	0.2–5.0
Reproducibility (typical):	mmol/L	80.0-200.0	1.00–10.00	50.0–150.0	0.40–1.50	0.40–4.00
Reproducibility within run (n=20):	% C.V.	< 1	< 2	< 2	----	----
	S.D. (mmol/L)	----	----	----	< 0.02	< 0.03
Reproducibility between run (10 days):	% C.V.	< 2	< 2.5	< 2.5	----	----
	S.D. (mmol/L)	----	----	----	< 0.03	< 0.05

Urine

Detection Range:	mmol/L	25–1000	1–500	25–500	----	----
Reproducibility (urine std.):	mmol/L	160.0	60.00	130.0	----	----
Reproducibility within run (n=20):	% C.V.	≤ 5	≤ 5	≤ 5	----	----
Reproducibility between run (10 days):	% C.V.	≤ 5	≤ 5	≤ 5	----	----

MANUFACTURED BY:



Medica Corporation
5 Oak Park Drive, Bedford, MA 01730-1413 USA
800 777 5983 (USA) • 781 275 4892 (Global) • 781 275 2731 (Fax)
medicacorp.com

CAT. NO. 2850

© 2018_04 Medica Corporation



Medica Corporation, 5 Oak Park Drive
Bedford, MA 01730-1413 USA
Emergo Europe, Prinsessegracht 20
2514 AP The Hague, The Netherlands

DISTRIBUTED BY:

Distributed by



Meditec Instruments Co.
Deals in: Medical / Laboratory Instruments, Reagents & Consumables

HEAD OFFICE
Suite 205, Telfer Plaza Plot No. A-20,
Comm. Area Near Duty Free Shop,
Karachi-75330, Pakistan.
Tel: 34314280 | Fax: (92-21) 34314282,
email: info@meditec.com.pk
Website: www.meditec.com.pk

Branches:
Karachi | 0334-0022552 / 0333-4314289
Dubai | 0334-0022556 / 061-2548629
Rajshahi | 0334-0022556 / 061-2548629
Quetta | 0334-0022557 / 081-2837672
Faisalabad | 0334-0022553
Multan | 0334-0022558